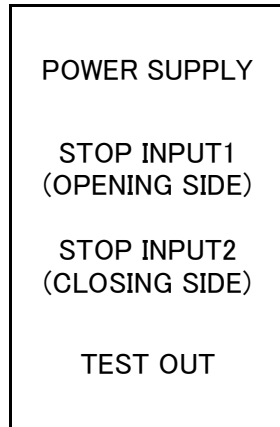


SSS-5 Wiring

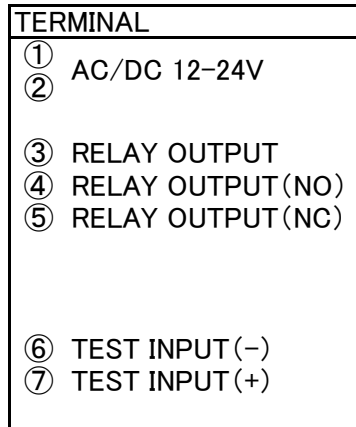
(OLD Version)

2020/8/18
Hotron

DOOR CONTROLLER



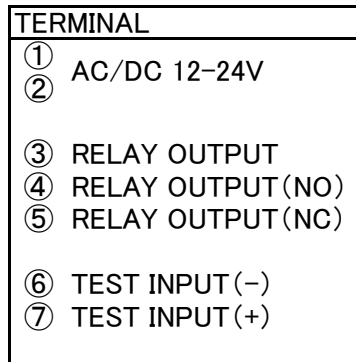
SSS-5



Dip SW #3 (Relay Output Mode : NC)
Dip SW #3 (Relay Output Mode : NO)

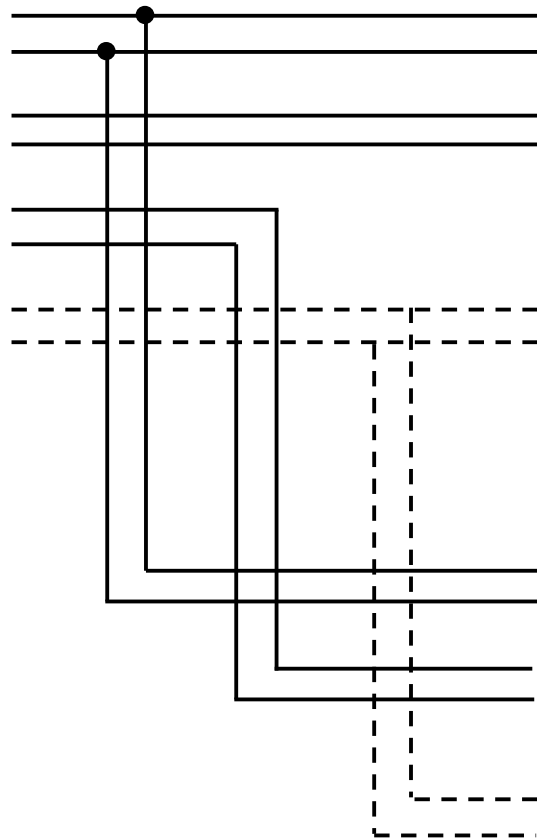
Dip SW #1 : A (Without a TEST input)

SSS-5



Dip SW #3 (Relay Output Mode : NO)
Dip SW #3 (Relay Output Mode : NC)

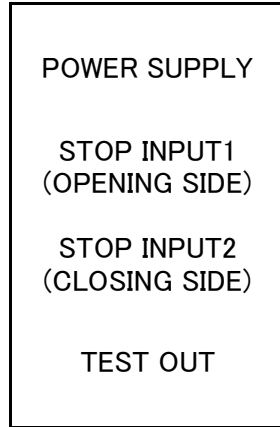
Dip SW #1 : A (Without a TEST input)



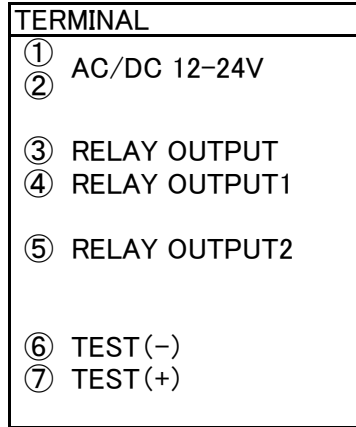
SSS-5 Wiring

(NEW Version 1PCB UNIT)

DOOR CONTROLLER



SSS-5



Slide SW: OFF

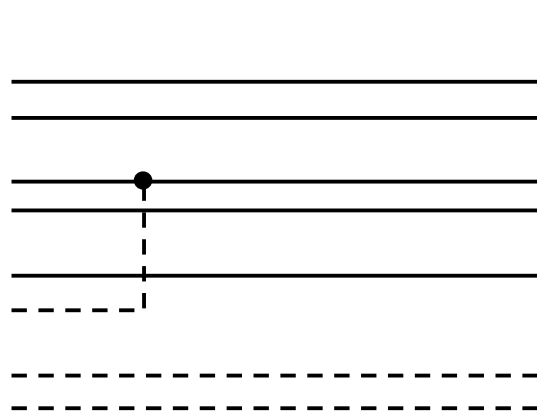
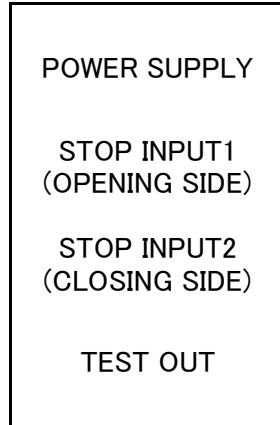
Dip SW #3 (Relay Output Mode : NC)

Dip SW #1 : A (Without a TEST input)

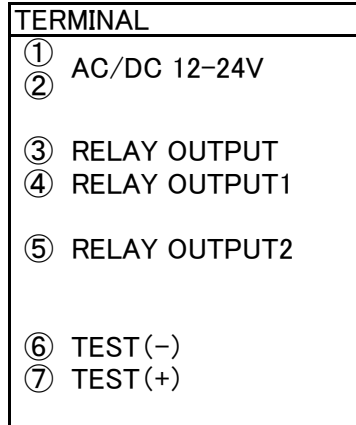
SSS-5 Wiring

(NEW Version 2PCB UNIT)

DOOR CONTROLLER



SSS-5



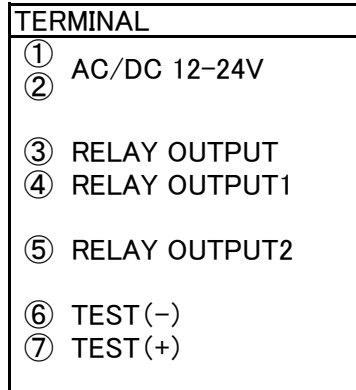
Slide SW: OFF

Dip SW #3 (Relay Output Mode : NC)

Without a TEST input, Dip SW #1 : A

Connect to each other using the Communication Cable

SSS-5



Slide SW: ON

Dip SW #3 (Relay Output Mode : NO)

Without a TEST input, Dip SW #1 : A