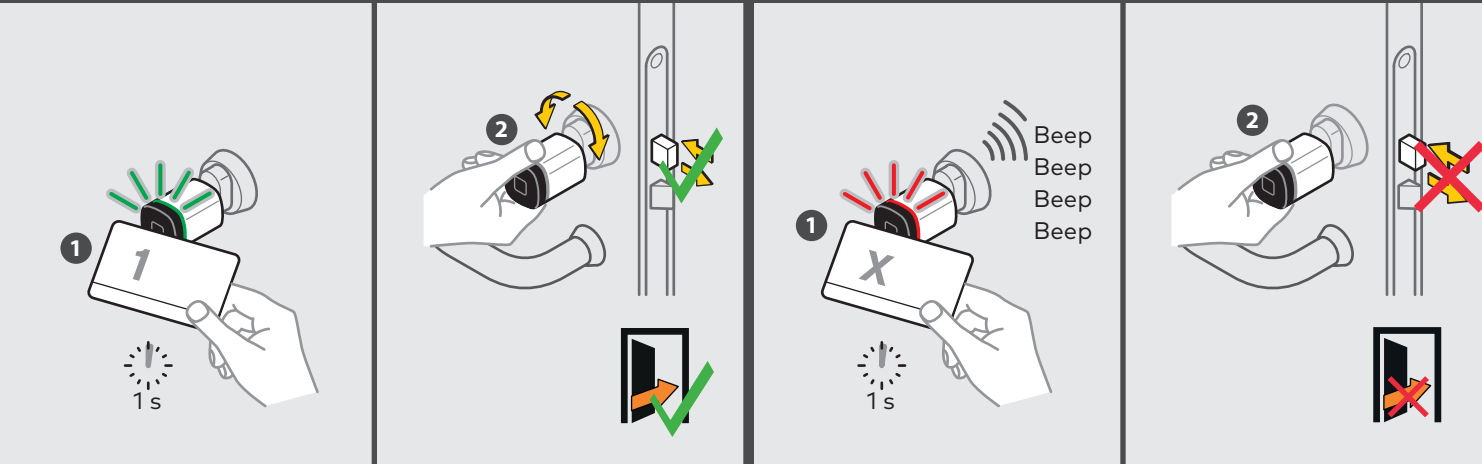


Manufacturer
dormakaba Schweiz AG
Mühlebühlstrasse 23
8620 Wetzikon
Switzerland

Phone +41 44 931 61 11
www.dormakaba.com

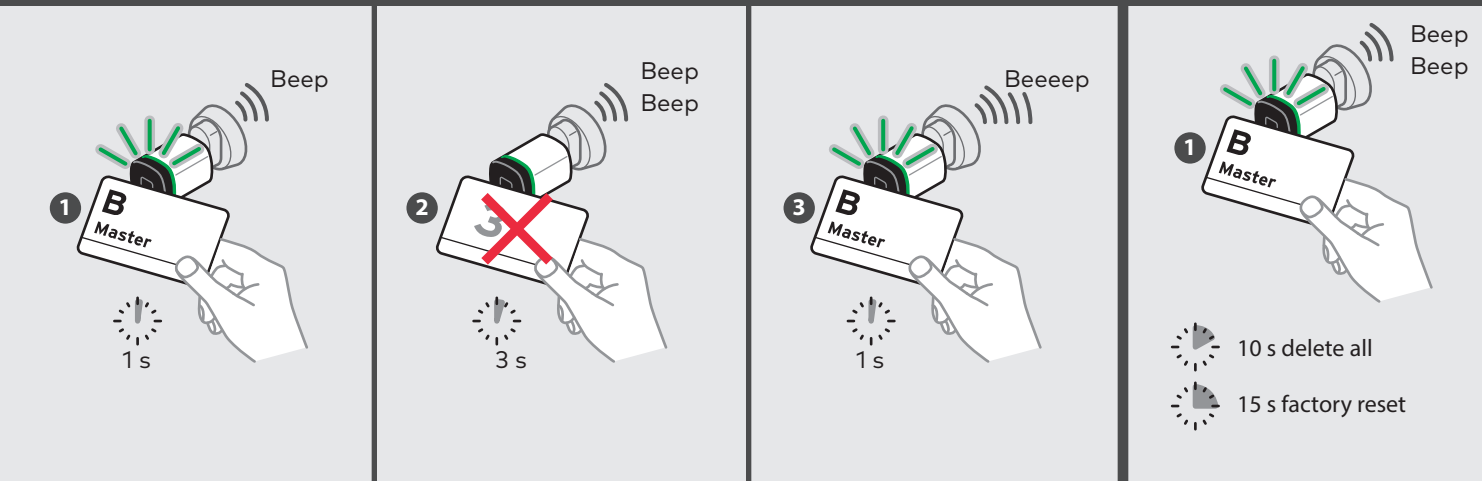
Handling/Signals – Användande/Signaler – Käyttäminen/ääni- ja valomerkit – Betjening/Signaler – Håndtering/Signaler



Please observe the technical manual.
För mer info se användarmanualen.
Noudata tuotteen käyttöohjeita.
Se brukermanualen for mer informasjon.
Vær opmærksom på betjeningsvejledningen.

Supplementary documentation is available on the dormakaba website (www.dormakaba.com/extranet-emea-en).
The original Declaration of Conformity can be downloaded from www.dormakaba.com/conformity

Deleting – Ta bort – Tunnisteen poisto – Slette – Sletning

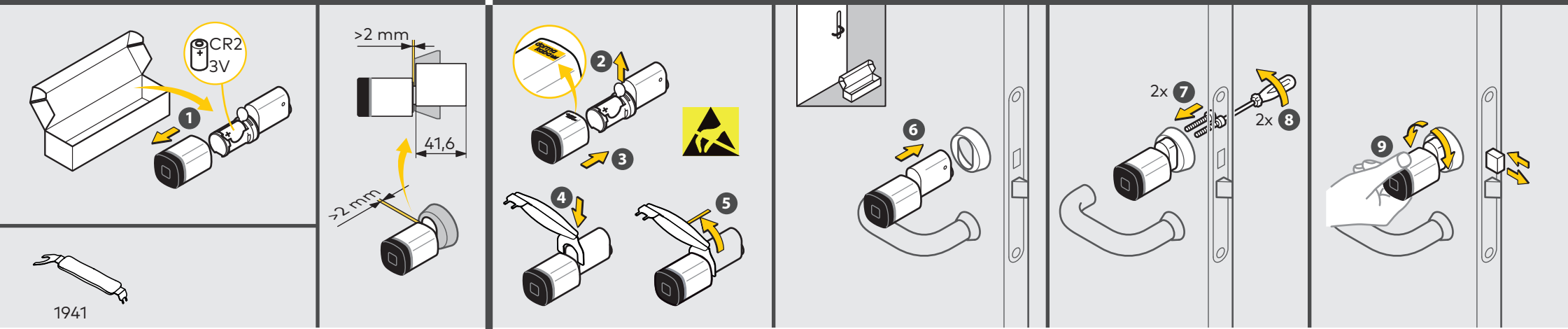


Quick guide
Snabbguide
Pikaohje
Hurtigguide
Quick guide

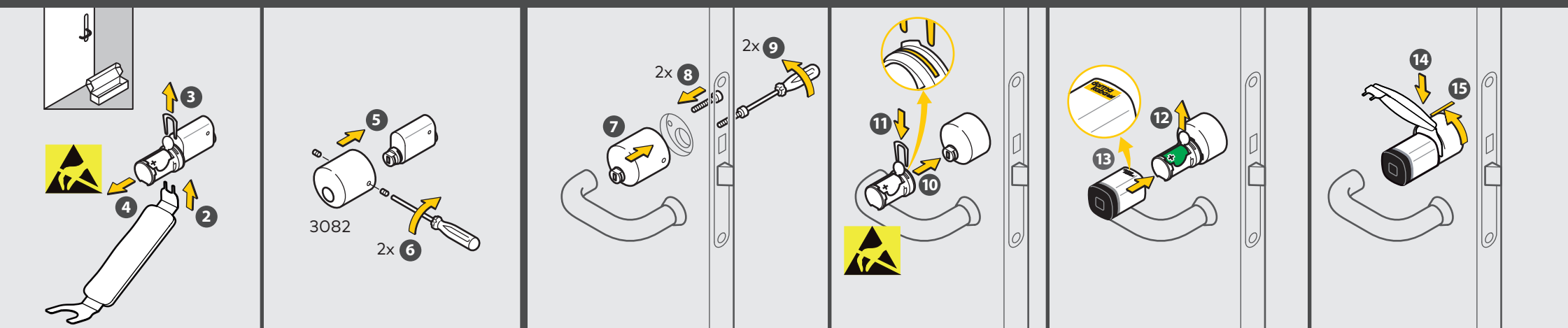
dormakaba
digital cylinder



Installation (A) – Installation (A) – Asennus (A) – Installasjon (A) – Installation (A)



Installation (B) – Installation (B) – Asennus (B) – Installasjon (B) – Installation (B)



Battery low

Change of battery – Batteribyte – Paristojen vaihto – Batteribytte – Udskift batteri

